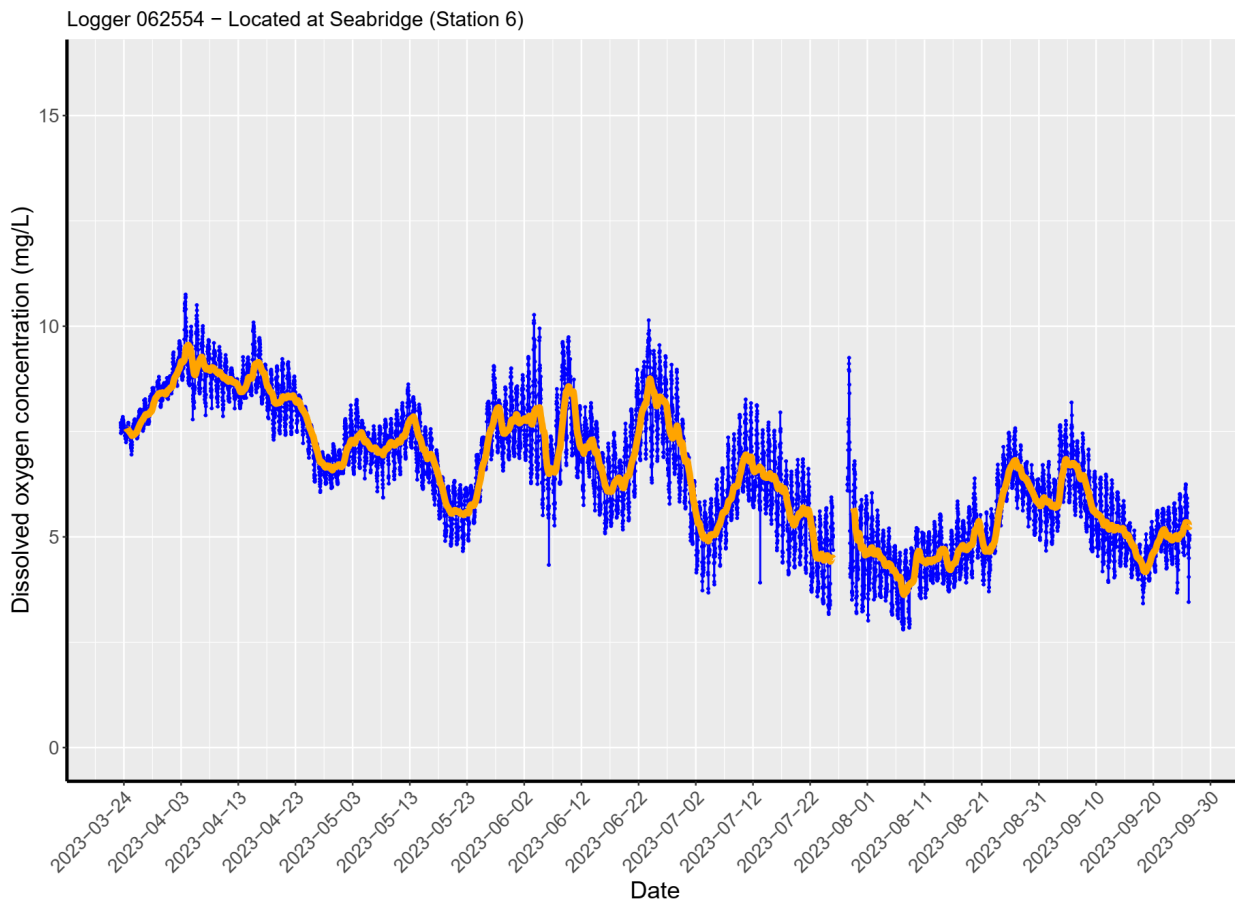
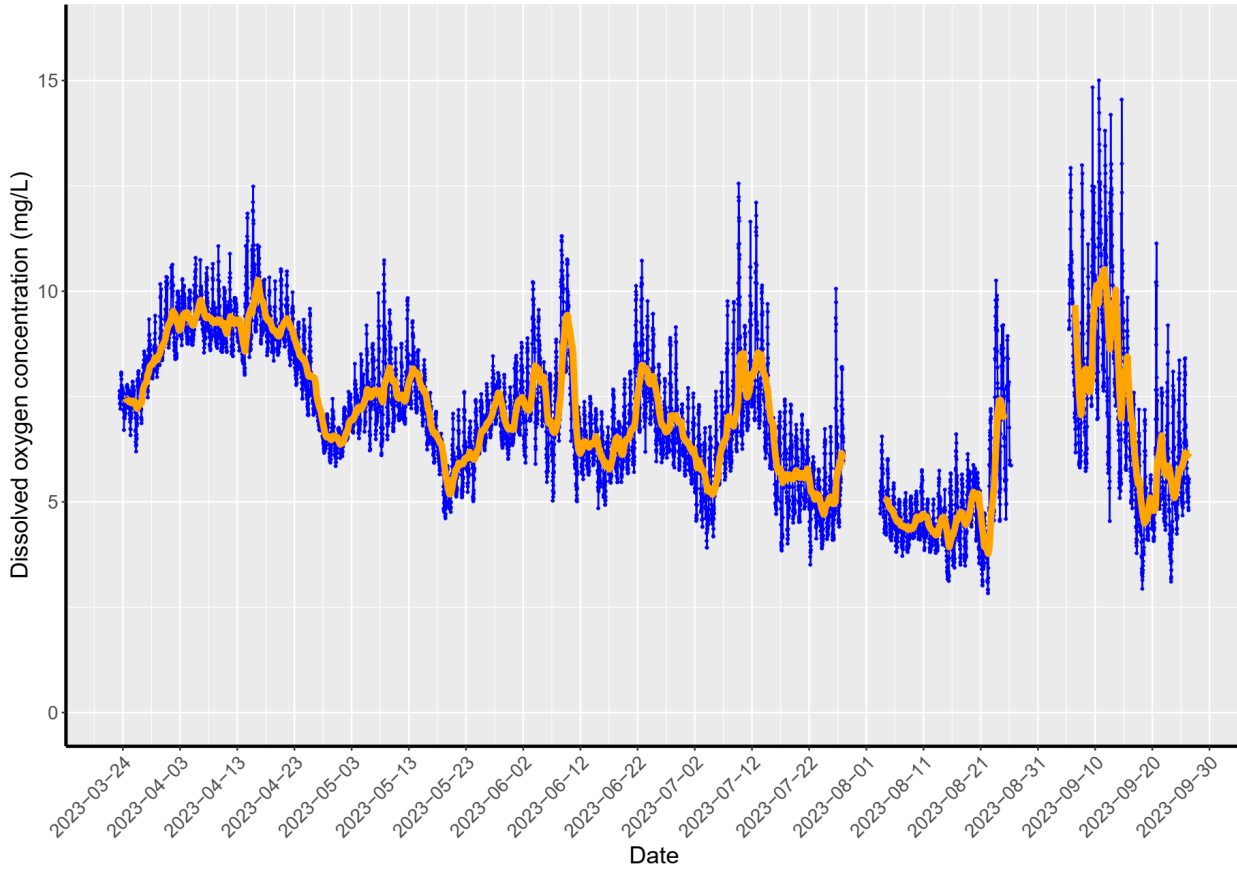


Below is the remote sensor data from 3/23/23 to 9/26/23, which is data collected since the date of installation (3/23/2023). This data captures trends of dissolved oxygen concentrations (DO; individual data points in blue and rolling average of prior 50 data points in orange) and chlorophyll fluorescence (a proxy for microscopic algal biomass; individual data points in green and rolling average of prior 50 data points in red) at two designated sampling locations. The DO sensor at Seabridge (station 6) was replaced on 7/28/2023, and the DO sensor at Westport (station 7) was replaced on 8/3/2023. The instrument at Westport (station 7) failed on 8/26/2023 and was replaced on 9/5/2023. Data points for chlorophyll >100 µg/L were removed as the values are likely artifactual, possibly due to interference by drifting macroalgae.

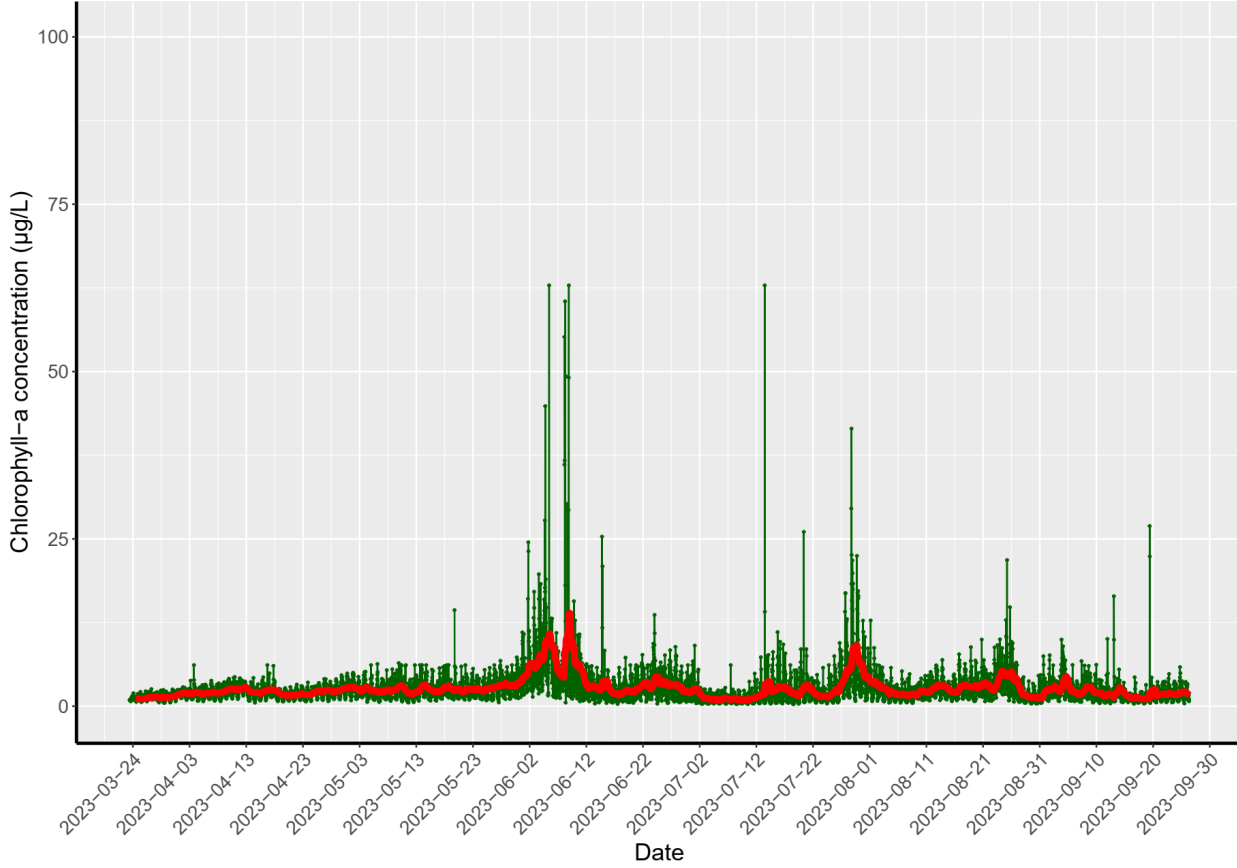
The City of Oxnard and Aquatic Bioassay & Consulting will continue to monitor the sensors in the area.



Logger 062555 – Located at Westport (Station 7)



Logger 062554 – Located at Seabridge (Station 6)



Logger 062555 – Located at Westport (Station 7)

