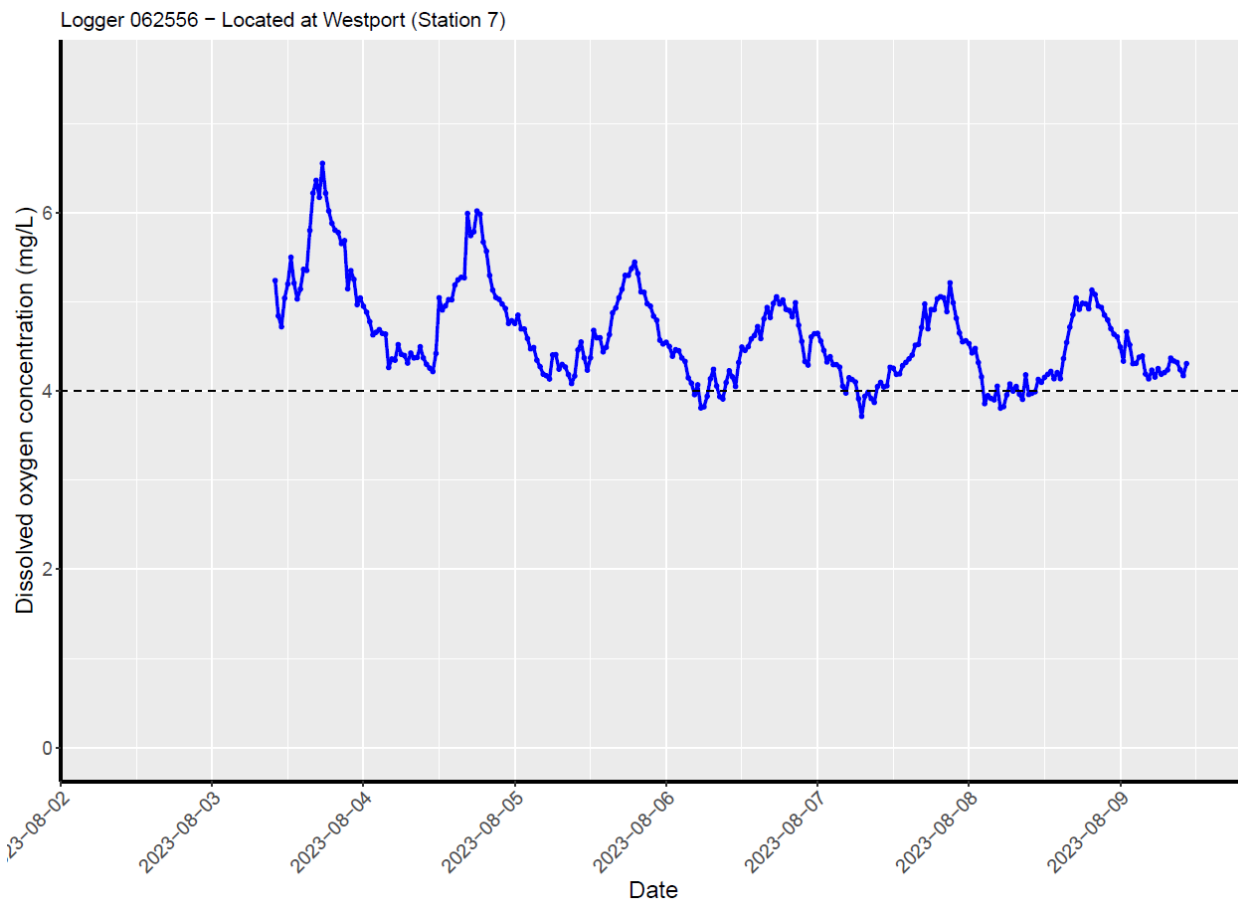
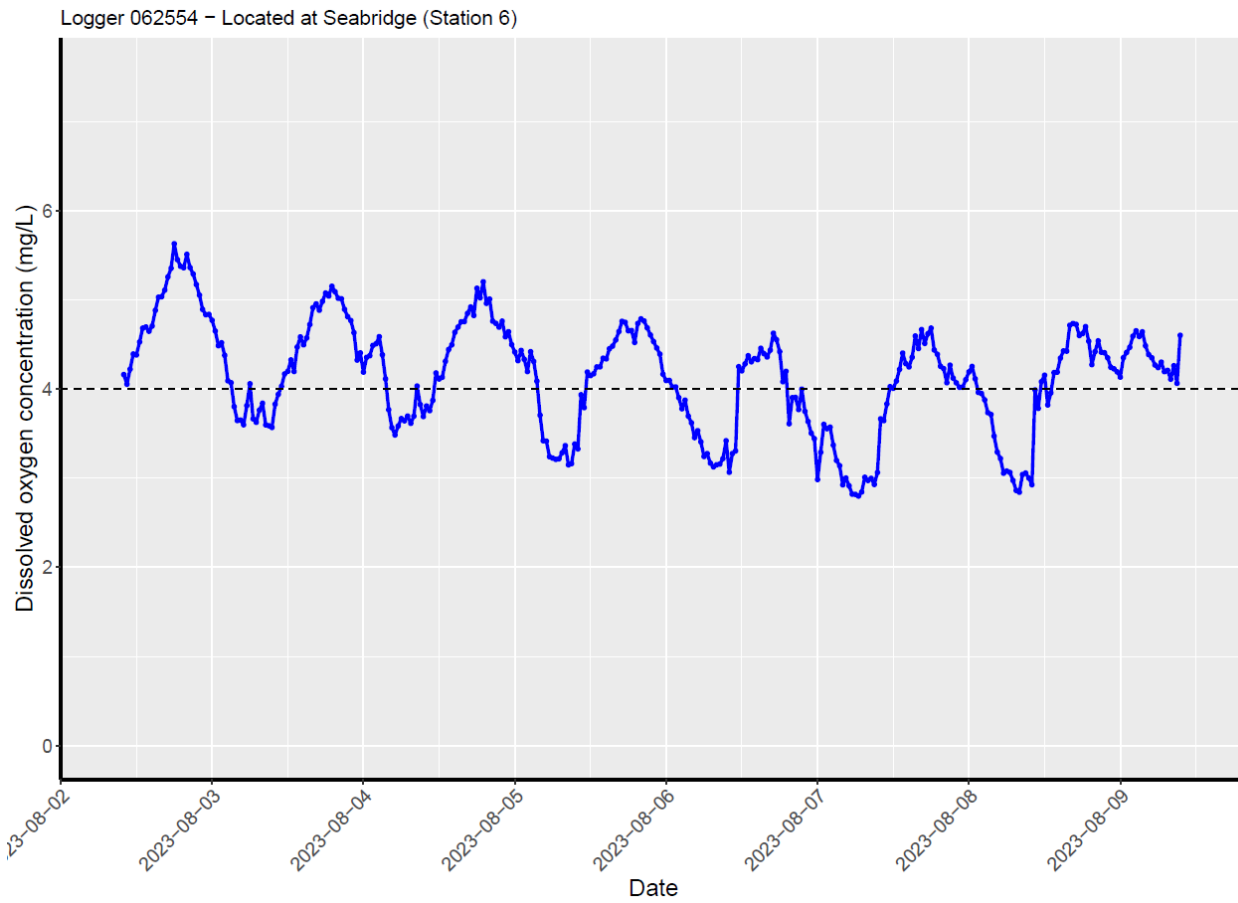
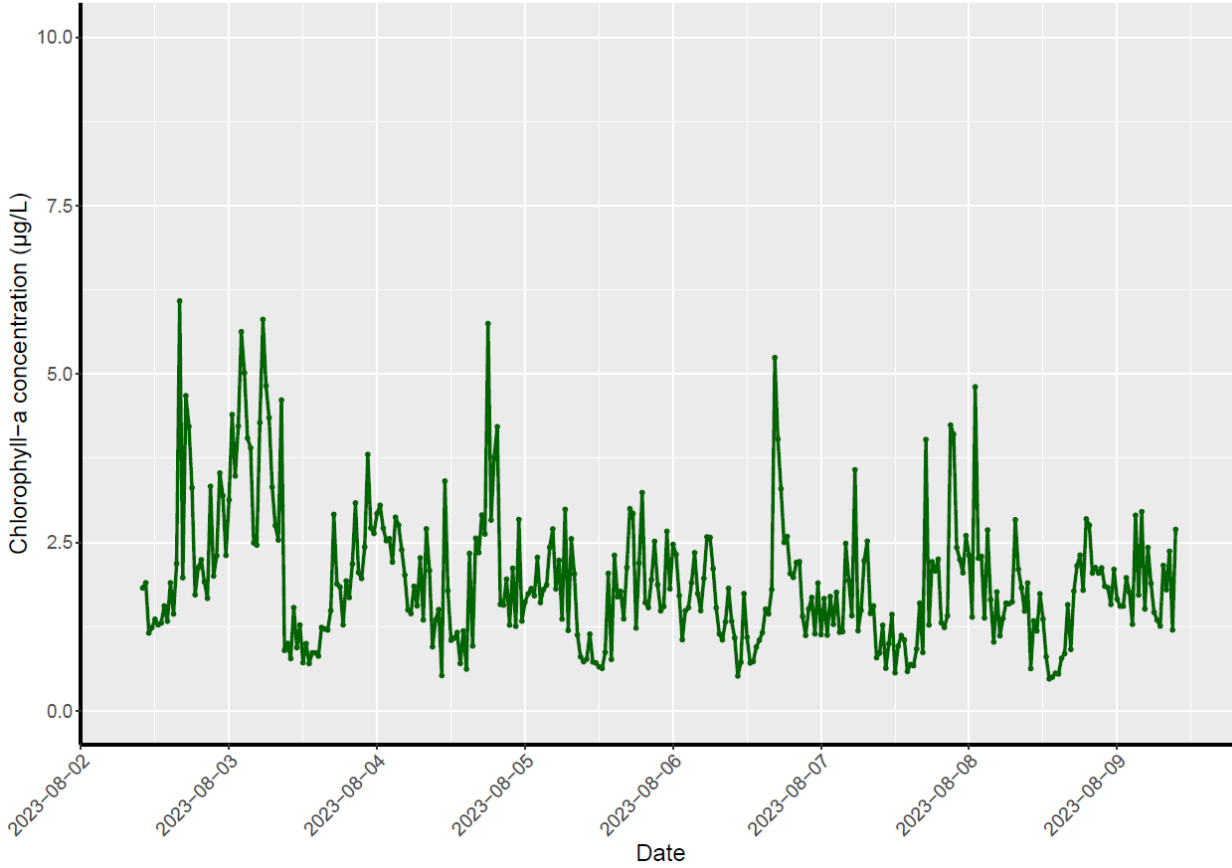


Below is the weekly remote sensor data from 8/2/23 to 8/9/23. Dissolved oxygen (DO; in blue) dropped below 4 mg/L (black dashed line) for hours during the night at Seabridge (station 6), but concentrations recovered to above 4 mg/L later in the day. The instrument at Westport (station 7) went offline for a few hours during the early morning of 8/3/2023 (flat green line for chlorophyll data at Westport), until the DO sensor was replaced later that morning. Chlorophyll concentrations (a proxy for microscopic algal biomass, in green) were acceptable at both stations with normal daily oscillations observed.

The City of Oxnard and Aquatic Bioassay & Consulting will continue to monitor the sensors in the area.



Logger 062554 – Located at Seabridge (Station 6)



Logger 062556 – Located at Westport (Station 7)

