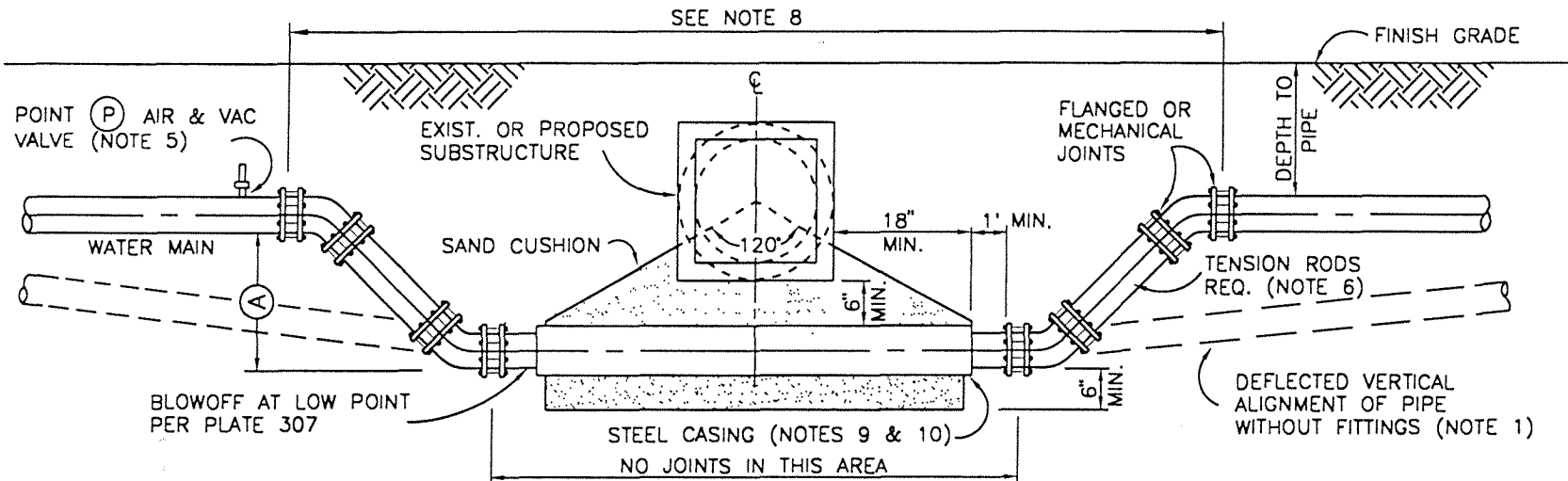


REV.	APPR. BY	DATE

REV.	APPR. BY	DATE



CASING TABLE		
WATER MAIN	CASING-INSIDE DIA.	THICKNESS
6 INCHES	12 INCHES	1/4 INCHES
8 INCHES	14 INCHES	1/4 INCHES
10 INCHES	16 INCHES	3/8 INCHES
12 INCHES	18 INCHES	3/8 INCHES
14 INCHES	20 INCHES	3/8 INCHES

NOTES:

- IF RETURN TO DESIGNED PIPE DEPTH BY DEFLECTION CANNOT BE ACCOMPLISHED WITHIN (40)', PIPE FITTINGS AND APPURTENANCES WILL BE REQUIRED PER THIS PLATE UNLESS OTHERWISE DIRECTED IN THE FIELD.
- MAXIMUM ALLOWABLE ANGLE OF ELBOW = 45°.
- MAXIMUM ALLOWABLE PIPE JOINT DEFLECTION SHALL BE PER PIPE MANUFACTURER'S RECOMMENDATION.
- ALL PIPE JOINTS 22 1/2' OR GREATER SHALL BE THRUST BLOCK PROTECTED.
- IF POINT (P) IS A HIGH POINT AND DIMENSION (A) IS CHANGED BY 1/2 THE PIPE DIAMETER IN SUCH A WAY THAT AIR WOULD BE TRAPPED, AN AIR-VAC VALVE SHALL BE INSTALLED PER PLATE 308. NOT REQUIRED ON FIRE HYDRANT LATERALS.
- TENSION RODS AND ANCHORS SHALL BE USED ON ALL INSTALLATIONS. TWO RODS ARE REQUIRED FROM BOTTOM TO TOP FITTING.
- ALL FITTINGS SHALL BE THERMO EPOXY OR MORTAR LINED, NO-OX-ID COATED AND P.E. WRAPPED.
- ALL PIPE FOR OFFSET SHALL BE PVC CLASS 200; MORTAR LINED OR EPOXY COATED DUCTILE IRON OR CMLC WELDED STEEL PIPE.
- MORTAR PLUG SHALL PENETRATE THE ENDS OF THE CASING SURROUNDING THE WATER MAIN TO A DEPTH OF 1 FT.
- IF 10' OR MORE OF WATERLINE IS UNDER STRUCTURE, CASING PER TABLE IS REQUIRED.
- RESTRAINED JOINTS MAY BE SUBSTITUTED IN LIEU OF THRUST BLOCKS. RESTRAINED JOINTS SHALL BE MANUFACTURED BY ROMAC INDUSTRIES, OR EQUAL.
- ALL FITTINGS SHALL BE DUCTILE IRON.
- PVC INSTALLATIONS SHALL INCLUDE A 12 GAUGE LOCATING WIRE.

Arnold
CITY OF

Department of Public Works

DRAWN: STAFF

CKD.: STAFF

APPR. *Granville M. Bowman*

SHEET 1 OF 1

RELOCATION OF WATER MAIN & FIRE HYDRANT LATERALS
CONDITION II

PLATE 313

STANDARD PLAN
2002