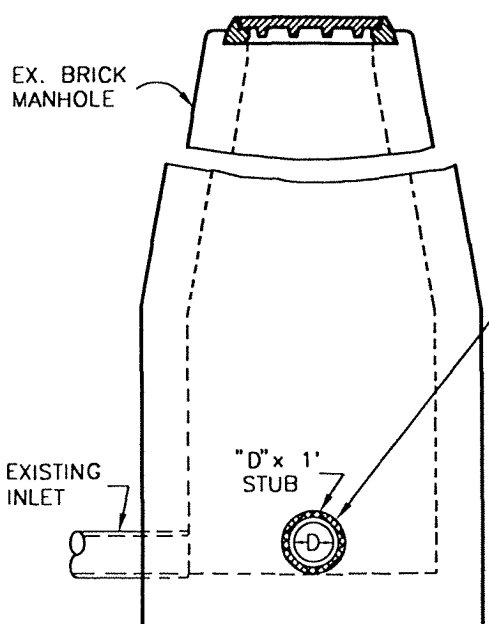
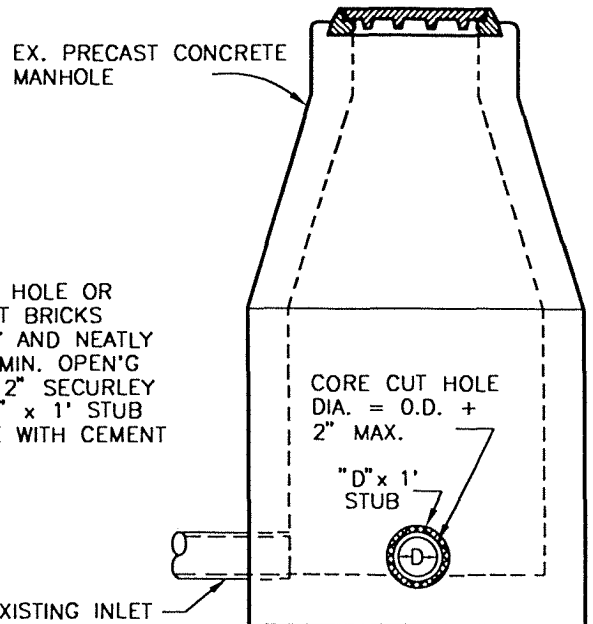


REV.	APPR. BY	DATE

REV.	APPR. BY	DATE



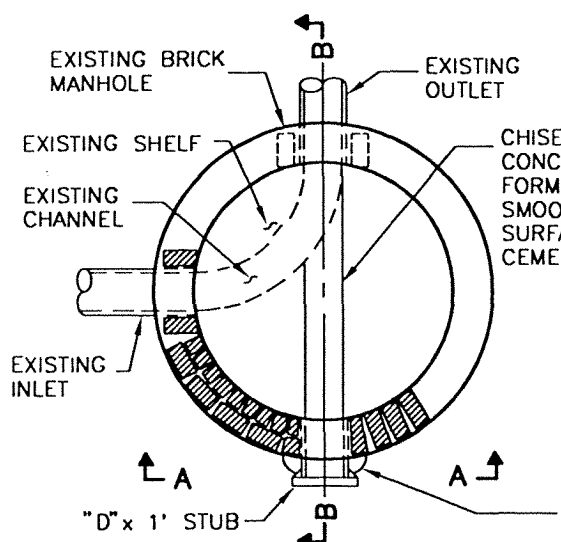
SECTIONAL ELEVATION A-A



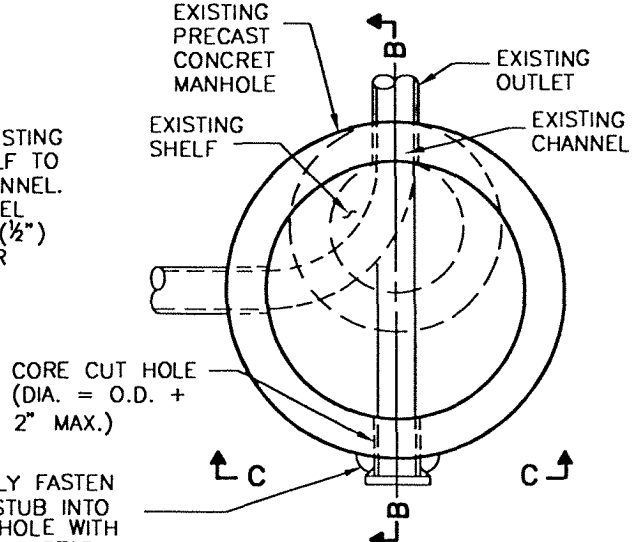
SECTIONAL ELEVATION C-C

CORE CUT HOLE OR BREAK OUT BRICKS CAREFULLY AND NEATLY TO FORM MIN. OPEN'G OF OD + 2" SECUR'G FASTEN "D" x 1' STUB INTO HOLE WITH CEMENT MORTAR.

CORE CUT HOLE DIA. = O.D. + 2" MAX.

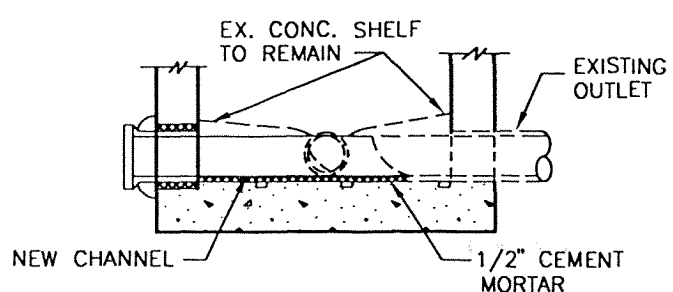


SECTIONAL PLAN OF BASE



SECTIONAL PLAN OF BASE

SECURELY FASTEN "D" x 1' STUB INTO CORED HOLE WITH CEMENT MORTAR



**SECTIONAL ELEVATION B-B
CHANNEL BASE**

NOTES:

1. INVERT ELEV. OF "D" AT THE INSIDE FACE OF MANHOLE TO BE 0.10' HIGHER THAN EXISTING OUTLET INVERT ELEV.
2. THE CORE CUT HOLE SHALL BE MADE WITH EQUIPMENT SPECIALLY DESIGNED TO CUT A SMOOTH HOLE WITHOUT SPALLING OR DAMAGE TO THE REINFORCING STEEL OR STRUCTURE.
3. "D" TO BE 8 IN. MINIMUM.
4. ALL WORK SHOULD BE UNCOVERED AND CONVENIENT FOR THE INSPECTION.
5. ALL CEMENT MORTAR SHALL BE CLASS "D" PER SUB-SECTION 201-5.1 OF THE SSPWC.

	MODIFYING EXISTING MANHOLES		STANDARD PLAN 2002
	DRAWN: STAFF Department of Public Works	CKD.: STAFF <i>B</i>	APPR. <i>Granville M. Bowman</i> Granville M. Bowman