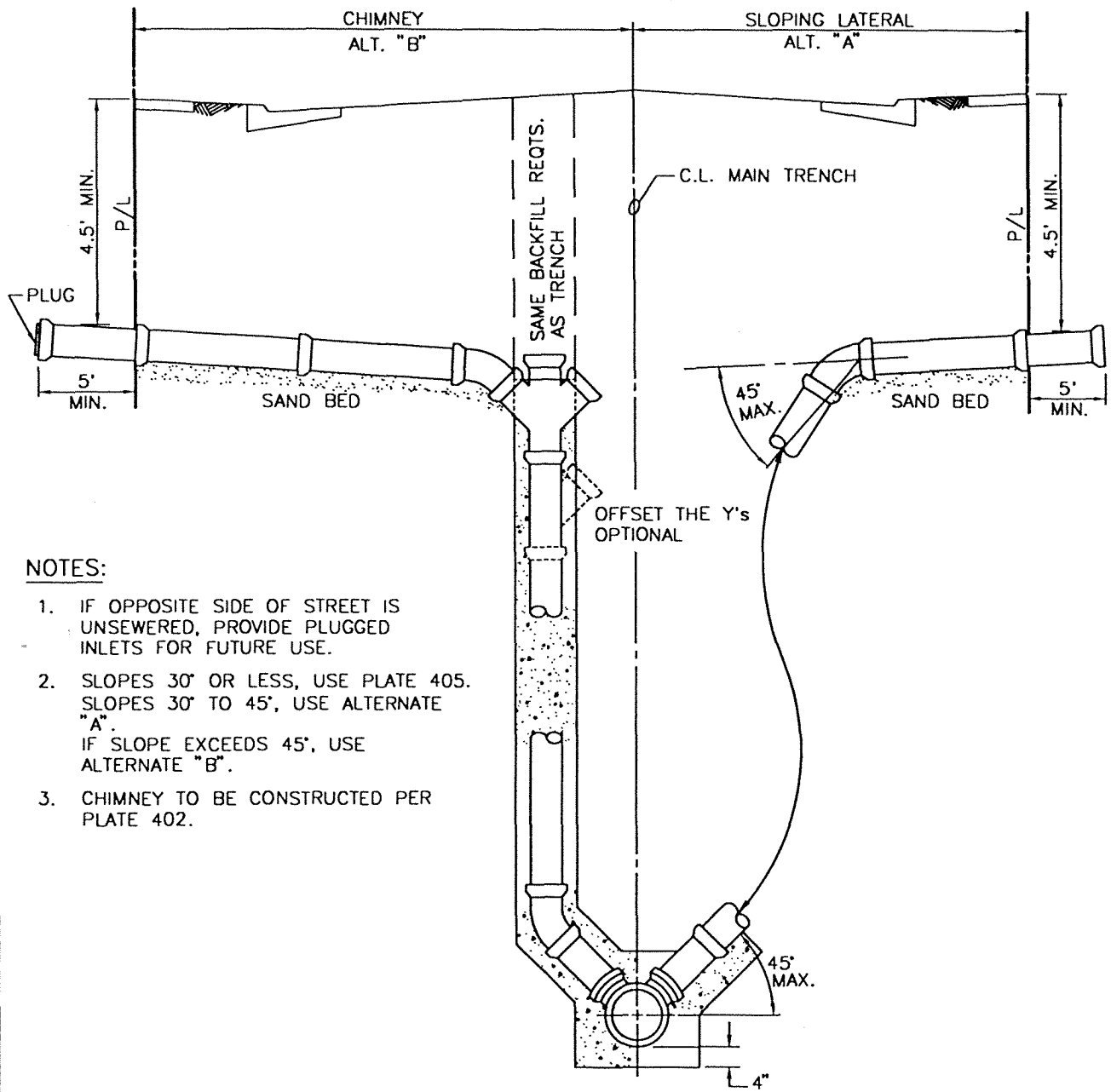


REV.	APPR. BY	DATE

REV.	APPR. BY	DATE



NOTES:

1. IF OPPOSITE SIDE OF STREET IS UNSEWERED, PROVIDE PLUGGED INLETS FOR FUTURE USE.
2. SLOPES 30° OR LESS, USE PLATE 405. SLOPES 30° TO 45°, USE ALTERNATE "A". IF SLOPE EXCEEDS 45°, USE ALTERNATE "B".
3. CHIMNEY TO BE CONSTRUCTED PER PLATE 402.

ELEVATION

	CITY OF Oxnard		STEEP SERVICE LATERAL		STANDARD PLAN 2002
	DRAWN: STAFF	CKD.: STAFF	<i>LB</i>		PLATE 406
Department of Public Works				APPR. <i>Granville M. Bowman</i>	SHEET 1 OF 1