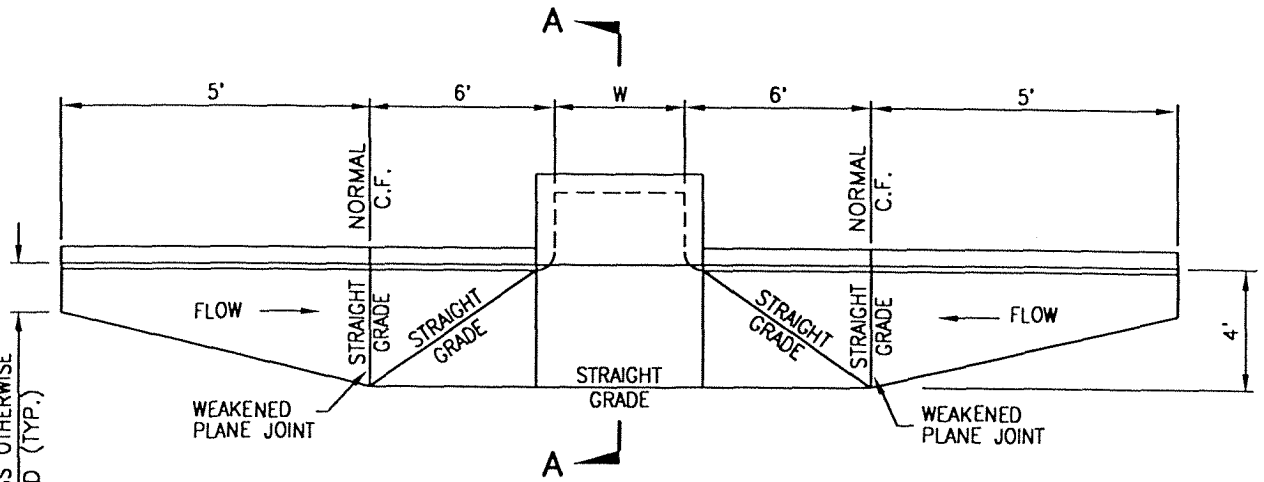


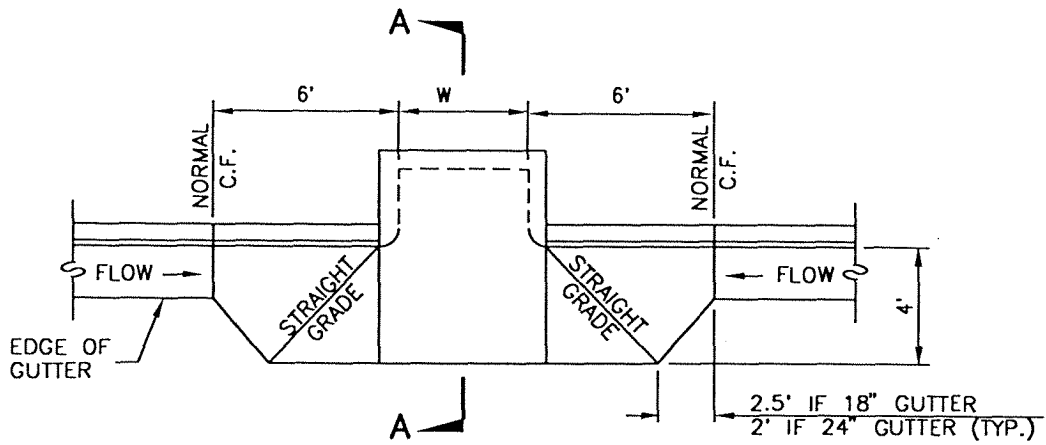
REV.	APPR. BY	DATE

REV.	APPR. BY	DATE

18" UNLESS OTHERWISE SPECIFIED (TYP.)

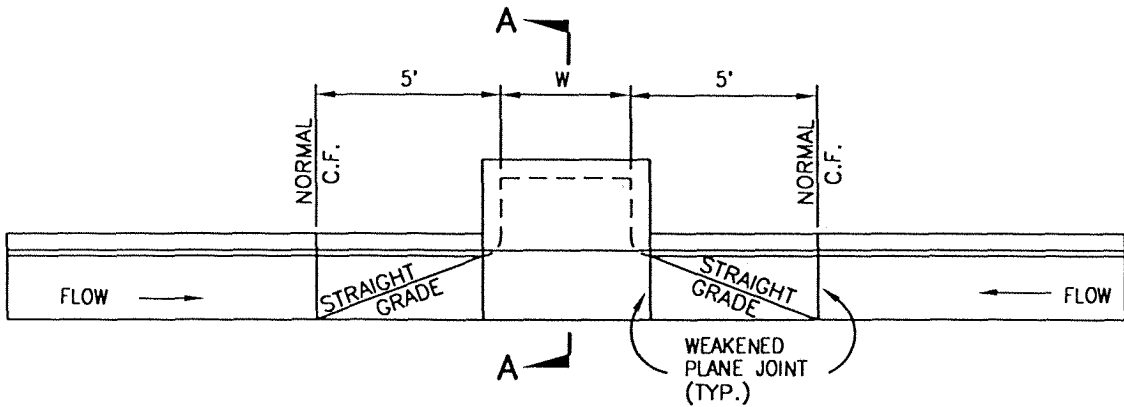


PLAN - CASE A



PLAN - CASE B

SEE NOTE 3



PLAN - CASE C

SEE NOTE 4



CITY OF

DRAWN: STAFF

CKD.: STAFF

Department of Public Works

APPR.

Granville M. Bowman

**LOCAL DEPRESSION FOR
SIDE OPENING CATCH BASIN**

STANDARD PLAN
2002

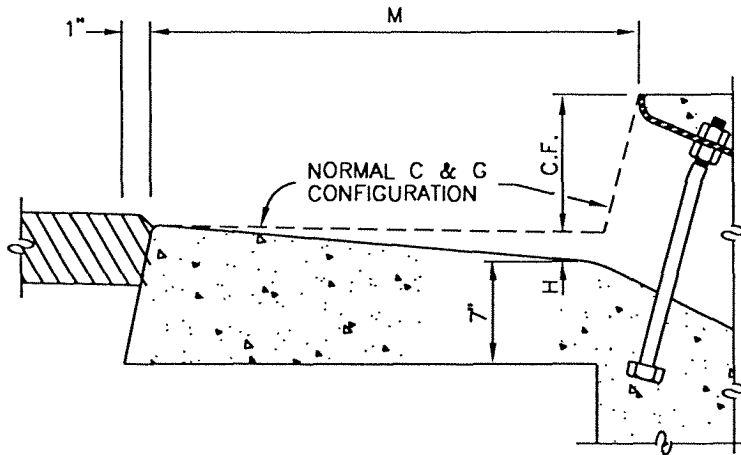
PLATE 509

SHEET 1 OF 2

NOTES:

1. H = 2" FOR CASES A & B, H=1" FOR CASE C UNLESS SPECIFIED OTHERWISE
2. F'c = 3000 PSI AT 28 DAYS. "C" GRADATION
3. CASE B WILL BE USED ONLY WHEN THE AGENCY HAS APPROVED THE USE FOR SPECIAL CIRCUMSTANCES.
4. USE CASE C IF FLOW FROM EACH DIRECTION IS LESS THAN 1CFS

M = 4' FOR CASES A & B
 = GUTTER WIDTH FOR CASE C



SECTION A-A

REV.	APPR. BY	DATE

REV.	APPR. BY	DATE



CITY OF

**LOCAL DEPRESSION FOR
 SIDE OPENING CATCH BASIN**

DRAWN: STAFF CKD.: STAFF *LB*

Department of Public Works APPR. *Granville M. Bowman*
 Granville M. Bowman

STANDARD PLAN
 2002

PLATE 509

SHEET 2 OF 2