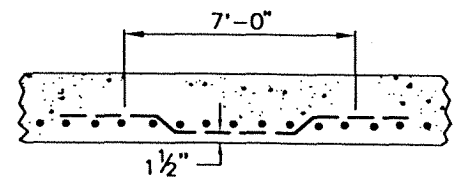
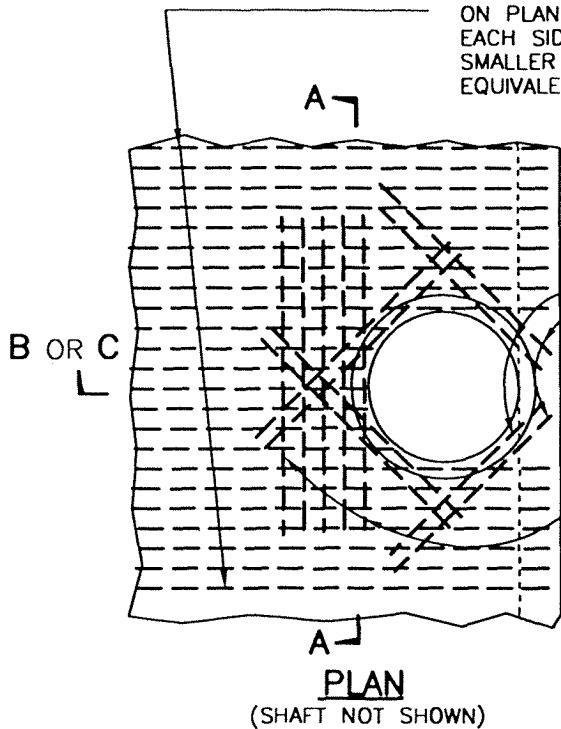


SIZE & SPACING OF STEEL AS SHOWN ON PLAN, EXCEPT THAT 5 BARS ON EACH SIDE OF SHAFT SHALL BE NOT SMALLER THAN #5 BARS, 4" O.C. OR EQUIVALENT



**SECTION A-A**

#5 BARS  
5' LONG, 4" C.C.

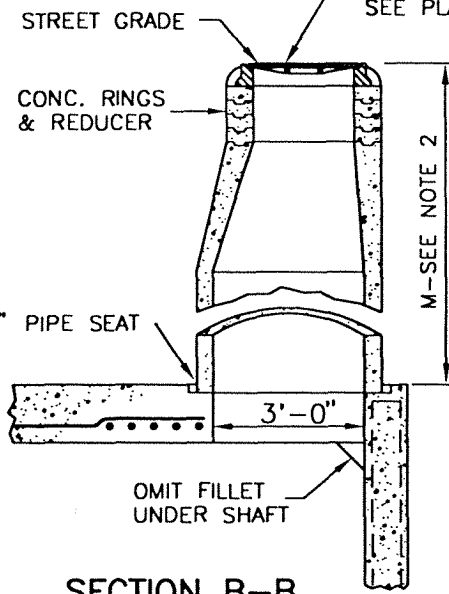
5 BARS 7' LONG, 4" O.C., OF SIZE SHOWN FOR TRANSVERSE STEEL, BUT NOT SMALLER THAN #5 BARS. WARP THESE BARS UNDER BARS THAT HAVE BEEN CUT FOR SHAFT OPENING.

**PLAN**  
(SHAFT NOT SHOWN)

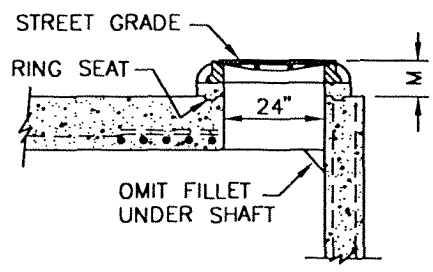
|          |      |
|----------|------|
| REV.     | DATE |
|          |      |
| APPR. BY |      |
|          |      |

|          |      |
|----------|------|
| REV.     | DATE |
|          |      |
| APPR. BY |      |
|          |      |

FOR INSTALLATION DETAILS SEE PLATE 516 & 517



**SECTION B-B**



**SECTION C-C**  
SEE NOTE 2

**MANHOLE FOR  
BOX SECTION STORM DRAIN**

**NOTES:**

1. FOR DETAILS OF ACCESS SHAFT SEE PLATE No. 516 & 517.
2. DEPTH M: WHEN DEPTH M FROM STREET GRADE TO TOP OF THE BOX IS LESS THAN 2'-10 1/2" FOR PAVED STREETS OR 3'-6" FOR UNPAVED STREETS, CONSTRUCT SHAFT PER SECTION C-C.

|                            |   |             |                              |
|----------------------------|---|-------------|------------------------------|
|                            | <b>MANHOLE No. 3</b><br>(IN CONCRETE BOX STORM DRAIN) |             | STANDARD PLAN<br>2002        |
|                            | DRAWN: STAFF  | CKD.: STAFF | APPR.<br>Granville M. Bowman |
| Department of Public Works |   |             | SHEET 1 OF 1                 |