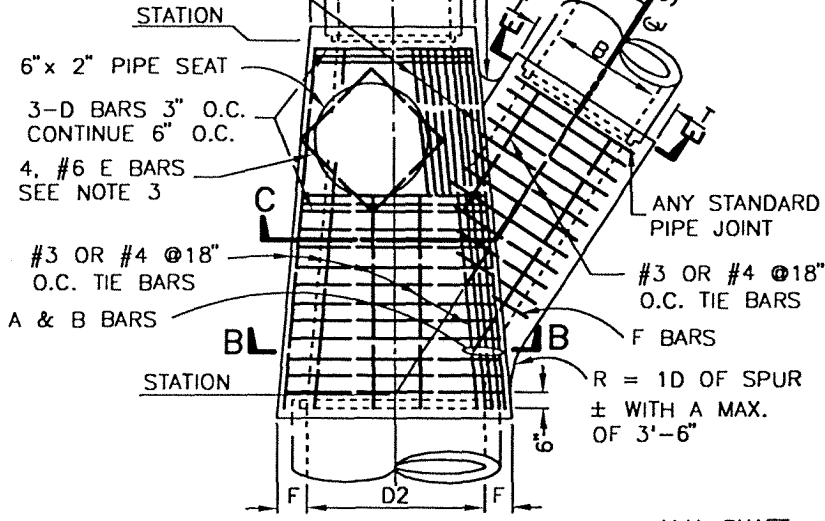


3-#4 J BARS, 4'-8" LONG,
3" O.C. CONTINUE
ADDITIONAL BARS
6" O.C. TO INSIDE
EDGE OF M.H.



PLAN
TYPE I

6" x 2" PIPE SEAT
3-D BARS 3" O.C.
CONTINUE 6" O.C.
4, #6 E BARS
SEE NOTE 3

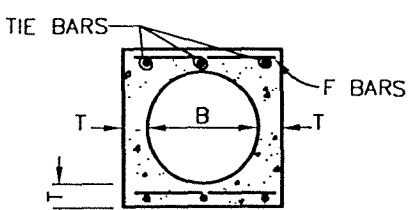
#3 OR #4 @18"
O.C. TIE BARS

ANY STANDARD
PIPE JOINT

#3 OR #4 @18"
O.C. TIE BARS

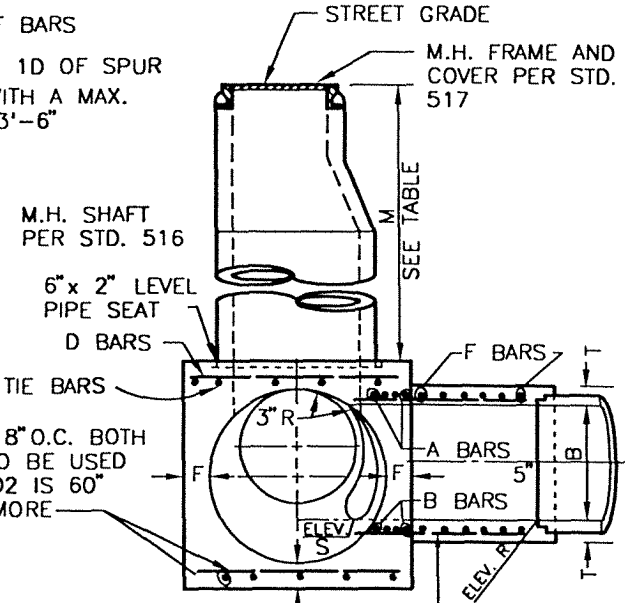
F BARS

R = 1D OF SPUR
± WITH A MAX.
OF 3'-6"



SECTION E-E

#4 @ 18" O.C. BOTH
WAYS TO BE USED
WHEN D2 IS 60"
OR MORE



SECTION B-B, C-C

M.H. FRAME AND
COVER PER STD.
517

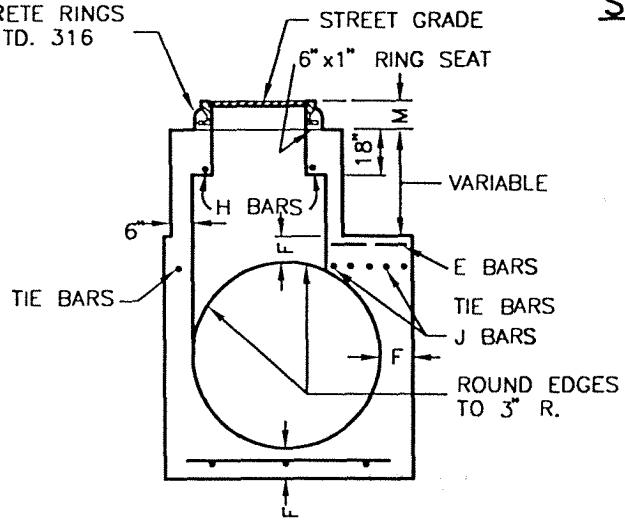
M.H. SHAFT
PER STD. 516

6" x 2" LEVEL
PIPE SEAT

D BARS

#4 @ 18" O.C.
BOTH WAYS. TO
BE USED WHEN
B IS 60" OR
MORE

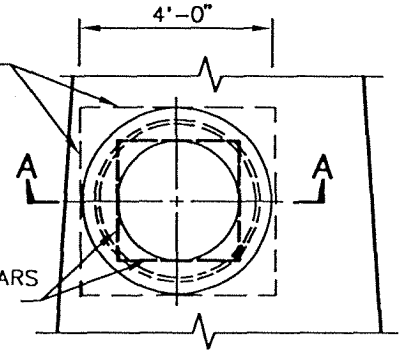
CONCRETE RINGS
PER STD. 316



SECTION A-A

OPTIONAL
OUTSIDE
EDGE OF
CONCRETE

4-#4 H BARS
3' LONG



DETAIL N

RINGS AND COVER NOT SHOWN
(SEE NOTE 2)

REV.	DATE

REV.	DATE



JUNCTION STRUCTURE No. 1

DRAWN: STAFF CKD.: STAFF
Department of Public Works

APPR. *Granville M. Bowman*
Granville M. Bowman

STANDARD PLAN
2002

PLATE 521

SHEET 1 OF 3

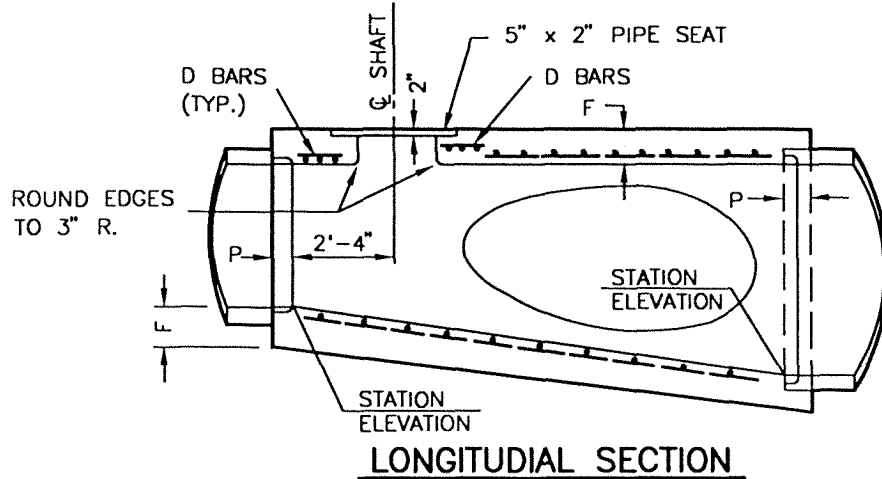


TABLE OF VALUES FOR M (SEE NOTE 2)

SECTION	PAVED STREET		UNPAVED STREET	
	MAX.	MIN.	MAX.	MIN.
B-B C-C		2'-10 1/2"		3'-6"
A-A	11"	8 1/2"	16"	15"

TABLE OF BAR SIZES

D2 OR B	A & B	D OR F
12" - 39"	#5 @ 3"	#4 @ 6"
42" - 84"	#6 @ 3"	#5 @ 6"
90" - 144"	#7 @ 3"	#6 @ 6"

TABLE OF VALUES FOR F


D2	F
36"	6 1/2"
39"	7"
42"	7 1/2"
45"	7 3/4"
48"	8"
51"	8 1/2"
54"	9"
57"	9 1/4"
60"	9 1/2"
63"	10"
66"	10 1/4"
69"	10 3/4"
72"	11"
78"	11 1/4"
84"	12 1/2"
90"	13 1/4"
96"	14"
102"	15 1/2"
108"	16"
114"	16 1/2"
120"	17"
126"	17"
132"	17 1/2"
138"	17 1/2"
144"	18"

TABLE OF VALUES FOR T

B	T
12"	4"
15"	4 1/4"
18"	4 1/2"
21"	5"
24"	5 1/4"
27"	5 1/2"
30"	6"
33"	6 1/4"
36"	6 1/2"
39"	7"
42"	7 1/2"
45"	7 3/4"
48"	8"
51"	8 1/2"
54"	9"
57"	9 1/4"
60"	9 1/2"
63"	10"
66"	10 1/4"
69"	10 3/4"
72"	11"
78"	11 1/4"
84"	12 1/2"
90"	13 1/4"
96"	14"
102"	15 1/2"
108"	16"
114"	16 1/2"
120"	17"
126"	17"
132"	17 1/2"
138"	17 1/2"
144"	18"

REV.	APPR.	BY	DATE

REV.	APPR.	BY	DATE

	JUNCTION STRUCTURE No. 1		STANDARD PLAN 2002
	DRAWN: STAFF Department of Public Works	CKD.: _____ APPR. <i>Gronville M. Bowman</i> Gronville M. Bowman	PLATE 521 SHEET 2 OF 3

NOTES:

1. VALUES FOR A, B, C, D1, D2, ELEVATION R AND ELEVATION S ARE SHOWN ON THE PROJECT DRAWINGS. ELEVATION S APPLIES AT INSIDE WALL OF STRUCTURE.
2. WHEN DEPTH M FROM STREET GRADE TO THE TOP OF THE BOX IS LESS THAN 2'-10 1/2" FOR PAVED STREETS OR 3'-6" FOR UNPAVED STREETS, CONSTRUCT MONOLITHIC SHAFT PER SECTION C-C AND DETAIL N. SHAFT FOR ANY MANHOLE MAY BE CONSTRUCTED PER SECTION C-C. WHEN DIAMETER D1 IS 48" OR LESS, CENTER OF SHAFT MAY BE LOCATED PER NOTE 3.
3. CENTER OF MANHOLE SHAFT SHALL BE LOCATED OVER CENTER LINE OF STORM DRAIN WHEN DIAMETER D1 IS 48" OR LESS, IN WHICH CASE PLACE E BARS SYMMETRICALLY AROUND SHAFT AT 45° WITH CENTER LINE.
4. LENGTH OF MANHOLE MAY BE INCREASED TO MEET PIPE ENDS. BUT ANY CHANGE IN LOCATION OF SPUR MUST BE APPROVED BY THE ENGINEER.
5. P SHALL BE 5" FOR D2 = 96" OR LESS AND 8" FOR D2 OVER 96".
6. REINFORCEMENT SHALL CONFORM TO ASTM 615, GRADE 40, AND SHALL TERMINATE 1 1/2" CLEAR OF CONCRETE SURFACES UNLESS OTHERWISE SHOWN.
7. FLOOR OF MANHOLE SHALL BE STEEL TROWELED TO SPRING LINE.
8. BODY OF MANHOLE SHALL BE POURED IN ONE CONTINUOUS OPERATION EXCEPT THAT A CONSTRUCTION JOINT WITH A LONGITUDINAL KEYWAY MAY BE PLACED AT SPRING LINE.
9. THICKNESS OF THE DECK SHALL VARY WHEN NECESSARY TO PROVIDE A LEVEL SEAT, BUT SHALL NOT BE LESS THAN THE TABULAR OF F SHOWN ON TABLE.
10. IF LATERALS ENTER ON BOTH SIDES OF MANHOLE, SHAFT SHALL BE LOCATED ON SIDE RECEIVING THE SMALLER LATERAL.
11. THE FOLLOWING CRITERIA SHALL BE USED FOR THIS JUNCTION STRUCTURE:
 - A. THIS STANDARD PLAN IS USED WHEN STANDARD PLAN 514 IS INADEQUATE. MAIN LINE = 48" INSIDE DIAMETER OR LARGER.
 - B. LATERAL = 12" TO 144" INSIDE DIAMETER: HOWEVER, THE INSIDE DIAMETER SHALL NOT EXCEED THE INSIDE DIAMETER OF THE MAIN LINE.
12. MANHOLE FRAME AND COVER SHALL CONFORM TO STANDARD PLAN 517 UNLESS OTHERWISE SHOWN.
13. MANHOLE SHAFT SHALL CONFORM TO STANDARD PLAN 516 UNLESS OTHERWISE SHOWN.

REV.	APPR. BY	DATE

REV.	APPR. BY	DATE

 <p>CITY OF Oxnard</p>	JUNCTION STRUCTURE No. 1		STANDARD PLAN 2002
	DRAWN: STAFF	CKD.: STAFF	 APPR. Granville M. Bowmon
Department of Public Works			PLATE 521
			SHEET 3 OF 3