

REV.	APPR. BY	DATE

REV.	APPR. BY	DATE

**Arnold**

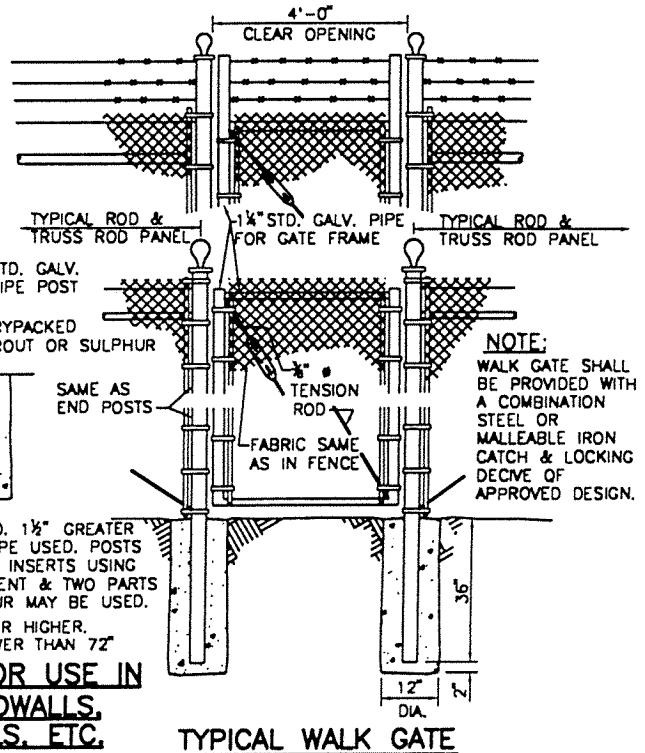
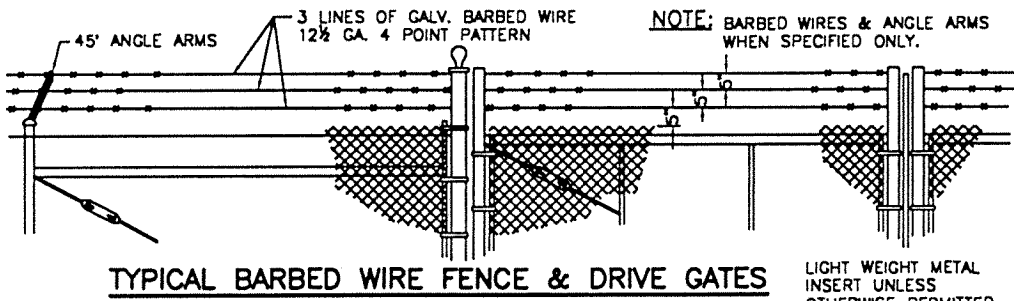
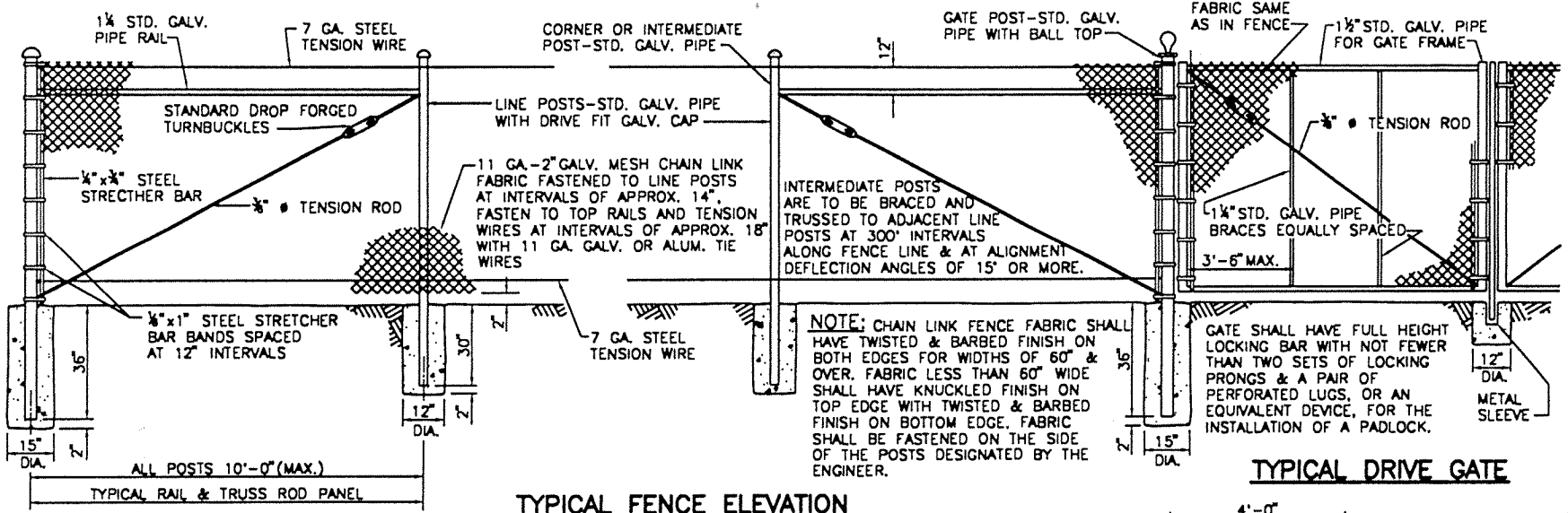
CITY OF

Department of Public Works  
DRAWN: STAFF  
CKD: STAFF

**STANDARD CHAIN LINK FENCE**

Appr. *Granville M. Bowman*

STANDARD PLAN  
2002  
**PLATE 613**  
SHEET 1 OF 1



**GENERAL NOTES:**

1. ALL POSTS SHALL BE STANDARD GALVANIZED PIPE & SHALL CONFORM TO THE FOLLOWING:

	SIZE PIPE	WT. PER LIN. FT. BEFORE GALV.
FOR 72" FENCE & OVER:		
END, CORNER & INTERMEDIATE POSTS	2 1/2"	5.79 LBS.
LINE POSTS	2"	3.65 LBS.
DRIVE GATE POSTS-SINGLE TO 6' OR DBL. TO 12' OPENINGS	3"	7.58 LBS.
DRIVE GATE POSTS-SINGLE OVER 6' TO 13' OR DBL. OVER 12' TO 26' INCLUSIVE OPENINGS	4"	10.79 LBS.
FOR FENCE LESS THAN 72":		
END, CORNER & INTERMEDIATE POSTS	2"	3.65 LBS.
LINE POSTS	2 1/2"	5.79 LBS.
DRIVE GATE POSTS-SINGLE TO 6' OR DBL. TO 12' OPENINGS	1 1/2"	2.72 LBS.
DRIVE GATE POSTS-SINGLE OVER 6' TO 13' OR DBL. OVER 12' TO 26' INCLUSIVE OPENINGS	3 1/2"	9.11 LBS.

2. ALL POSTS SHALL BE FITTED WITH APPROVED TOPS.

3. ALL WALK & DRIVE GATES SHALL BE HUNG BY TWO MALLEABLE IRON HINGES. BOTTOM HINGE TO BE BALL & SOCKET TYPE.

**NOTE:** INSERT SHALL HAVE AN I.D. 1/8" GREATER THAN THE O.D. OF THE PIPE USED. POSTS ARE TO BE GROUTED INTO INSERTS USING GROUT OF ONE PART CEMENT & TWO PARTS SAND, OR MOLTEN SULPHUR MAY BE USED.

V=18" FOR 72" FENCE OR HIGHER.  
V=12" FOR A FENCE LOWER THAN 72"

**POST DETAIL FOR USE IN CONCRETE HEADWALLS, RETAINING WALLS, ETC.**